



OFFERS OVER £220,000

Pinfold Gardens, Forest Town,
Mansfield,

Welcome to **BuckleyBrown**, where every home is carefully presented, so you can explore with clarity and confidence.

BuckleyBrown
ESTATE AGENTS

"A lovely bungalow that feels welcoming as soon as you step inside, and just keeps getting better as you head out into the garden. Well presented and easy to live in, it's got a bright outdoor space that really adds to the charm and makes it feel like a proper home."

Luke, Senior Valuer



A PROPERTY THAT CONTINUES TO IMPRESS AS YOU EXPLORE

A delightful bungalow that feels warm and welcoming from the moment you arrive,

This charming home is beautifully presented throughout and offers a relaxed, easy-to-enjoy lifestyle in a setting that immediately feels inviting. Bright and comfortable living spaces create a wonderful sense of homeliness, while the property's appealing layout allows for effortless day-to-day living. Outside, it truly comes into its own with a generous enclosed rear garden that provides a lovely extension of the home, offering plenty of space to relax, entertain, garden or simply unwind in private surroundings. Complemented by the convenience of a private driveway, this combines charm, comfort and practicality to create a home that is as enjoyable outside as it is within.



THE FINER DETAILS

This detached bungalow offers two bedrooms, a three-piece shower room, a reception room, conservatory, and a versatile converted garage room, providing comfortable and flexible living accommodation.

Upon entering the property, you are welcomed into a central hallway with a useful storage cupboard and access to the main living areas. The reception room is bright and inviting, featuring an attractive fireplace as its focal point. Sliding doors lead through to the conservatory, which enjoys plenty of natural light and provides a pleasant additional living space. French doors open directly onto the rear garden, creating a seamless connection between indoors and out.

The accommodation further comprises two well-proportioned bedrooms, suitable for a range of needs, served by a modern three-piece shower room, providing practicality and convenience for everyday living.

Outside, the property benefits from a beautifully maintained rear garden designed for low-maintenance enjoyment. Fully paved and complemented by a variety of established shrubs, it provides an attractive and private outdoor space. The former garage has been converted into an additional room, ideal for a home office, hobby room or gym, and can be accessed via French doors from the garden or directly from the front driveway. To the front, the property features a gravelled frontage, creating an attractive approach while requiring minimal upkeep. A private driveway provides off-road parking for up to two vehicles.





BuckleyBrown
ESTATE AGENTS





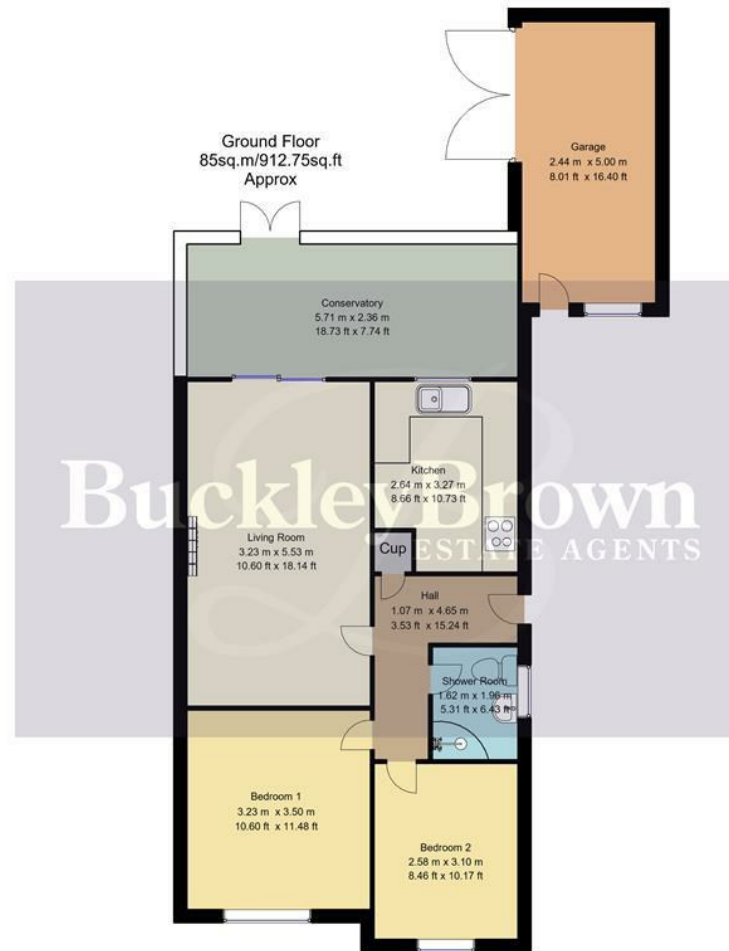


LIFE IN FOREST TOWN

Enjoy the best of both worlds in Forest Town, where local conveniences meet scenic countryside and a welcoming community atmosphere.

Forest Town offers an excellent balance of convenience and lifestyle, making it a popular and well-established residential location. A range of everyday amenities can be found nearby, including shops, supermarkets, healthcare facilities, cafés and leisure services, while Mansfield town centre is just a short distance away for a wider selection of retail, dining and entertainment options. The area is also well placed for those who enjoy the outdoors, with easy access to local parks, walking routes and the historic surroundings of Sherwood Forest. Combining a strong sense of community with excellent local amenities and attractive green spaces, Forest Town provides a welcoming setting that appeals to a wide range of residents seeking both convenience and quality of life.





Whilst every attempt has been made to ensure the accuracy of the floor plan contained here, no responsibility is taken for incorrect measurements of doors, windows, appliances and room or any error, omission or misstatement. Exterior and interior walls are drawn to scale based on interior measurements. Any figure given is for initial guidance only and should not be relied on as basis of valuation. These plans are for marketing purposes only and should be used as such by any prospective purchase. Specially no guarantee is should not be relied on as a basis of valuation. These plans are for marketing purposes only and should be used as such by any prospective purchase. Specifically no guarantee is given on the total square footage of the property if quoted on this plan.

CC Ltd ©2018

Key Features

Detached bungalow with versatile accommodation

Bright living room with fireplace and conservatory access

Conservatory opening onto the rear garden

Converted garage offering flexible additional space

Low-maintenance, private rear garden with shrubs

Sought-after Forest Town location with great amenities and green space

Approximate Size

912 Sq.ft

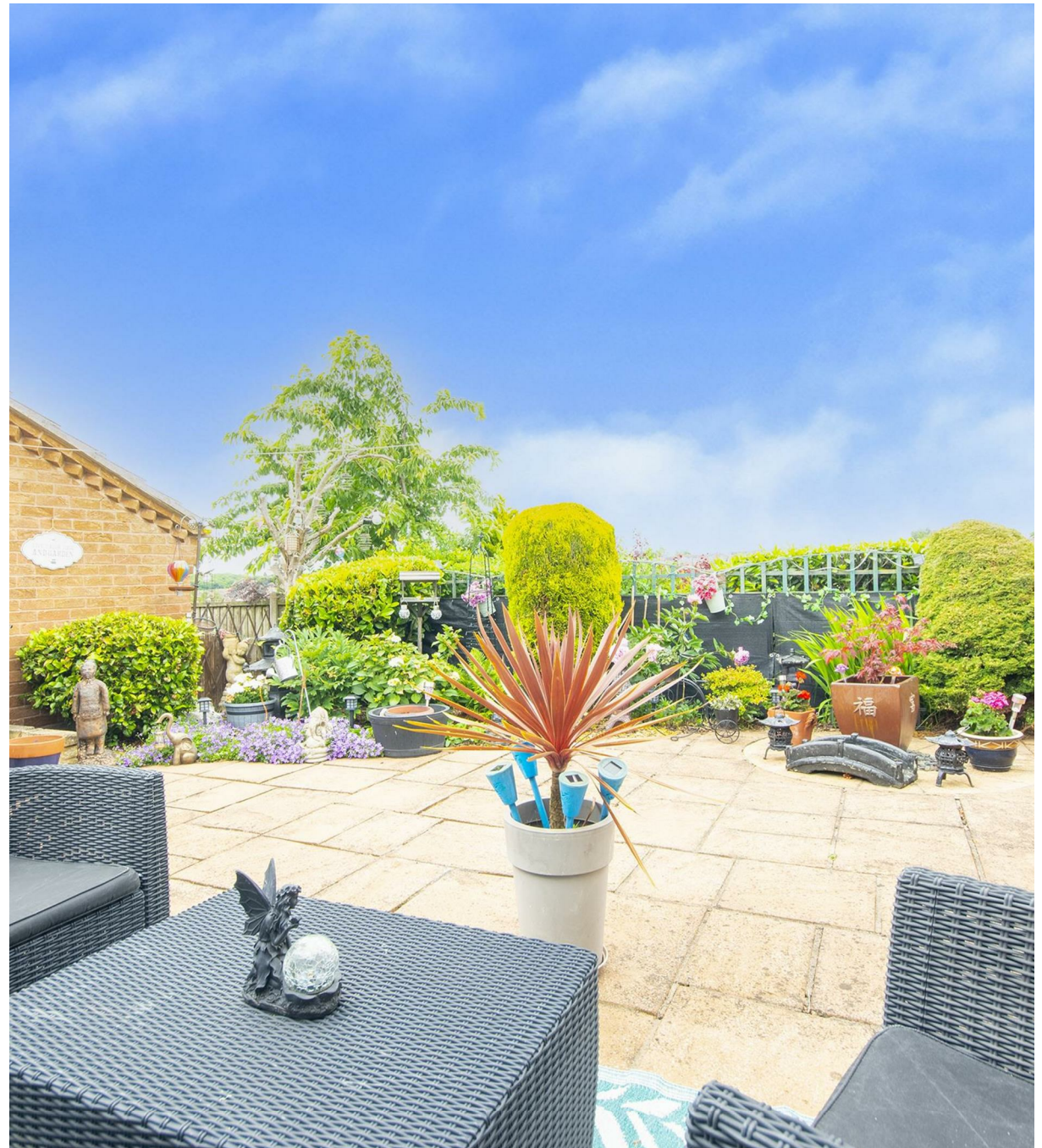
Energy Performance Certificate

Rating C

Council Tax Band

B

BuckleyBrown
ESTATE AGENTS



These particulars are intended as a guide only and do not form part of any offer or contract. All descriptions, measurements, images and plans are provided for illustration purposes and should not be relied upon as statements of fact. Prospective purchasers should satisfy themselves as to the accuracy of the information. Buckley Brown Estate Agents accept no liability for any loss arising from reliance on these details.

© Buckley Brown Estate Agents 2026. All rights reserved.

Exceptional homes deserve
exceptional representation.

Let's Chat.

01623 633633

mansfield@buckleybrown.co.uk

[buckleybrown.co.uk](https://www.buckleybrown.co.uk)

BuckleyBrown
ESTATE AGENTS